

Heaven and Earth Designs

Sweet Innocence

Chart No: HAEZIN 205

By Michele Sayetta

Copyrighted Artwork Zindy S. D. Nielsen



Finished Design Size 400 W by 320 H (16 W X 12-3/4 H inches on 25ct)

Heaven and Earth Designs LLC

1373 45th Ave SW

Willmar MN 56201

320-214-7998

<http://www.heavenandearthdesigns.com>

TM/© 2008 Zindy S. D. Nielsen

<http://zindy-zone.dk/>

Instructions

The model for Sweet Innocence is recommended to be stitched over 1 on 25 count Dublin Linen. Please use 1 strand of floss or 2 depending on your coverage preference. Charts are recommended to be stitched from page 1 top left to the last page bottom right.

It is recommended that you make working copies and enlarge to view detail and symbols.

You may also use the tent stitch or full crosses depending on your preference.

This is a large project that will offer many hours of stitching pleasure.















We thank you for purchasing this design and welcome any questions or comments that you may have.

Heaven and Earth Designs LLC

TM/© 2008 Zindy S. D. Nielsen
<http://zindy-zone.dk/>

Pattern Name: Sweet Innocence-Nielsen
Designed By: Michele Sayetta
Company: Heaven and Earth Designs
Copyright: 2008
Fabric: Linen 25, White
 400w X 320h Stitches
Size: 25 Count, 16w X 12-3/4h in


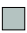












Floss Used for Full Stitches:

Symbol	Strands	Type	Number	Color
	2	DMC	032	Kreinik #4
	2	DMC	168	Pewter-VYLT
	2	DMC	169	Pewter-LT
	2	DMC	310	Black
	2	DMC	317	Pewter Gray
	2	DMC	318	Steel Gray-LT
	2	DMC	413	Pewter Gray-DK
	2	DMC	414	Steel Gray-DK
	2	DMC	415	Pearl Gray
	2	DMC	452	Shell Gray-MD
	2	DMC	453	Shell Gray-LT
	2	DMC	762	Pearl Gray-VYLT
	2	DMC	3799	Pewter Gray-VYDK
	2	DMC	3865	Winter White

Usage Summary

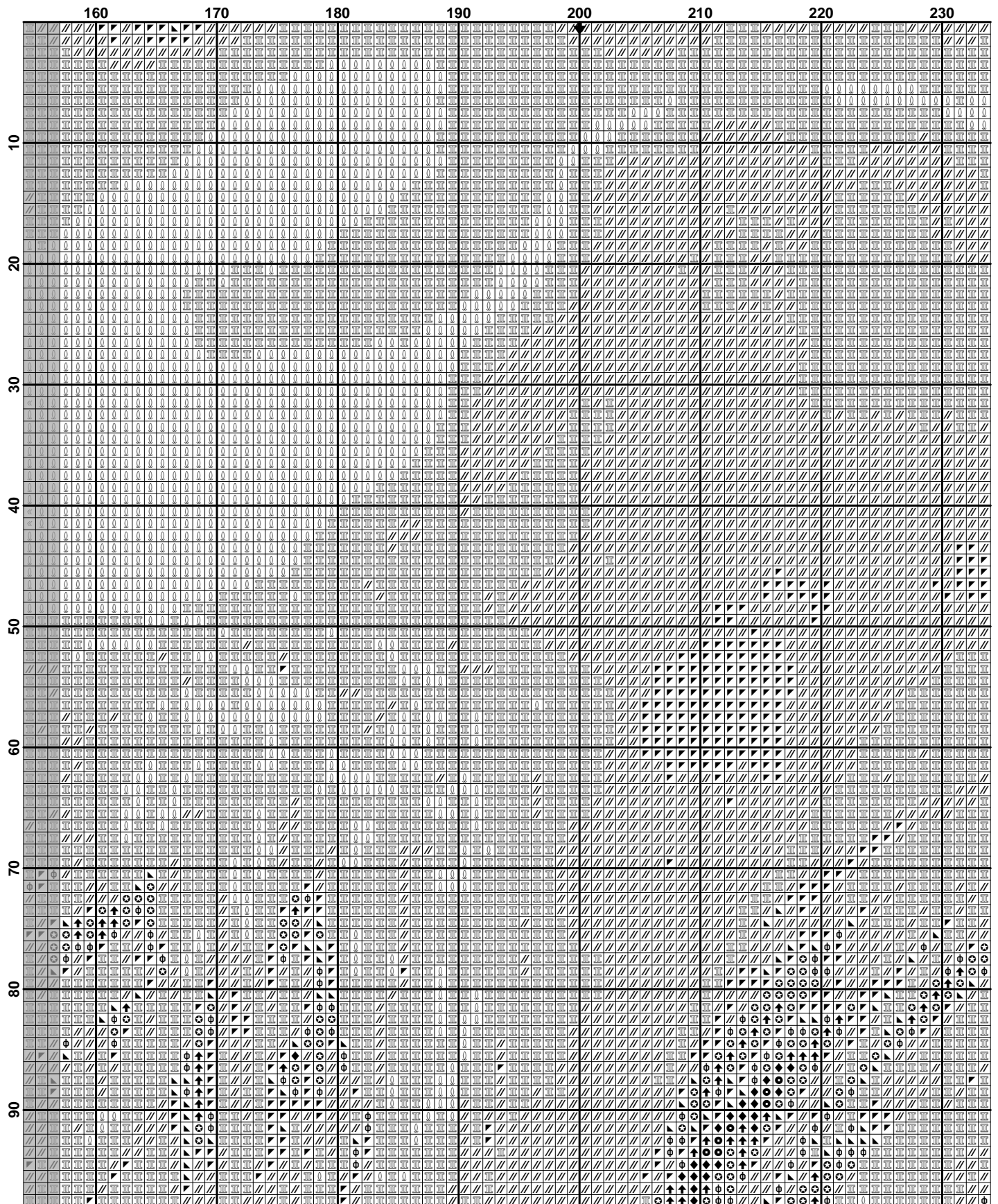
Strands Per Skein: 6

Skein Length: 313.0 in

Type	Number	Full	Half	Quarter	Petite	Back(in)	Str(in)	Spec(in)	French	Bead	Skein Est.
 DMC 032	24070	0	0	0	0.0	0.0	0.0	0	0	7.000	
 DMC 168	7346	0	0	0	0.0	0.0	0.0	0	0	3.000	
 DMC 169	1697	0	0	0	0.0	0.0	0.0	0	0	1.000	
 DMC 310	1	0	0	0	0.0	0.0	0.0	0	0	1.000	
 DMC 317	639	0	0	0	0.0	0.0	0.0	0	0	1.000	
 DMC 318	2829	0	0	0	0.0	0.0	0.0	0	0	1.000	
 DMC 413	313	0	0	0	0.0	0.0	0.0	0	0	1.000	
 DMC 414	1020	0	0	0	0.0	0.0	0.0	0	0	1.000	
 DMC 415	14769	0	0	0	0.0	0.0	0.0	0	0	5.000	
 DMC 452	4174	0	0	0	0.0	0.0	0.0	0	0	2.000	
 DMC 453	21049	0	0	0	0.0	0.0	0.0	0	0	6.000	
 DMC 762	38732	0	0	0	0.0	0.0	0.0	0	0	11.000	
 DMC 3799	323	0	0	0	0.0	0.0	0.0	0	0	1.000	
 DMC 3865	11038	0	0	0	0.0	0.0	0.0	0	0	4.000	

	10	20	30	40	50	60	70	80	
10									
20									
30									
40									
50									
60									
70									
80									
90									

	80	90	100	110	120	130	140	150
10								
20								
30								
40								
50								
60								
70								
80								
90								



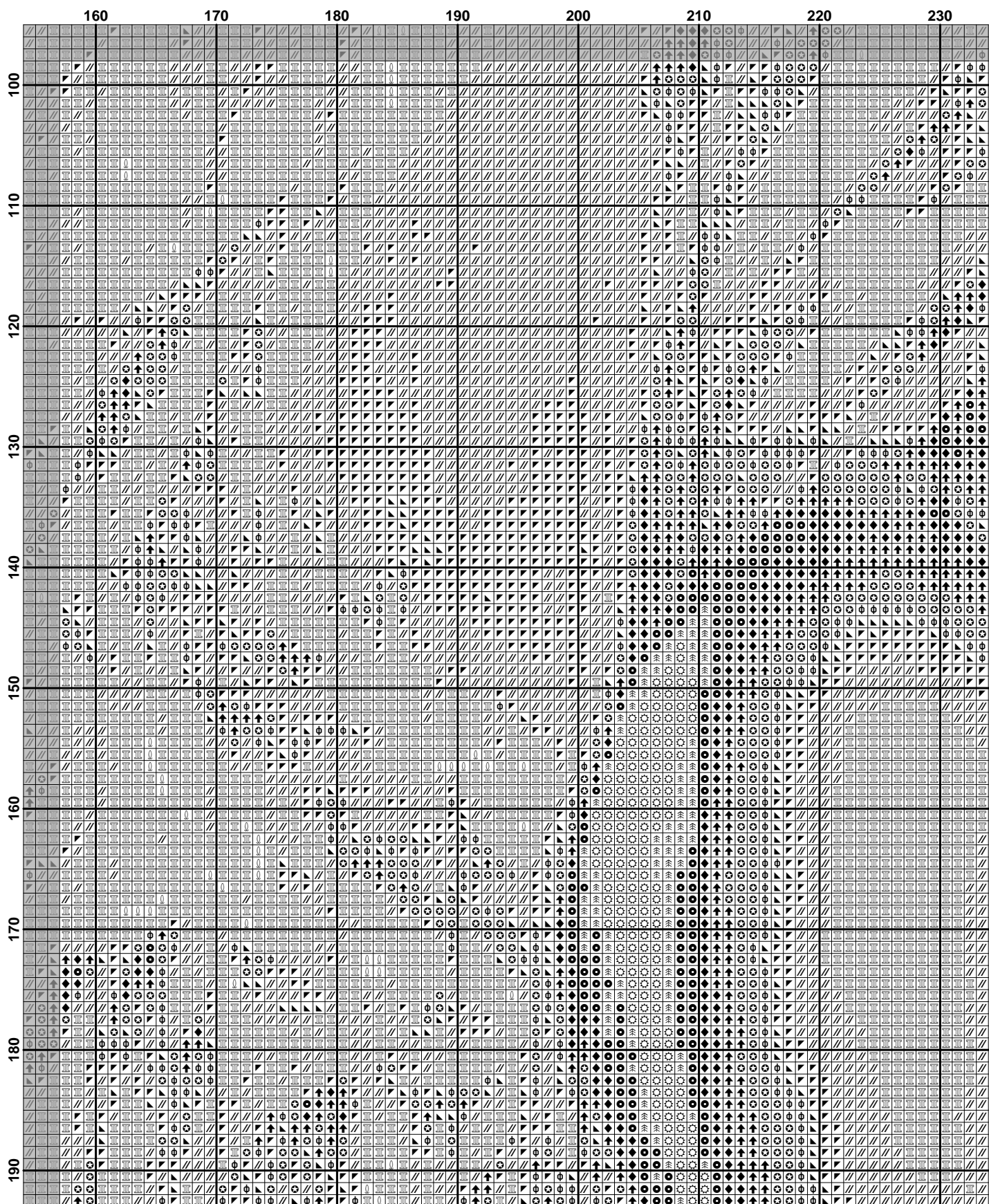
	240	250	260	270	280	290	300	310
10								
20								
30								
40								
50								
60								
70								
80								
90								

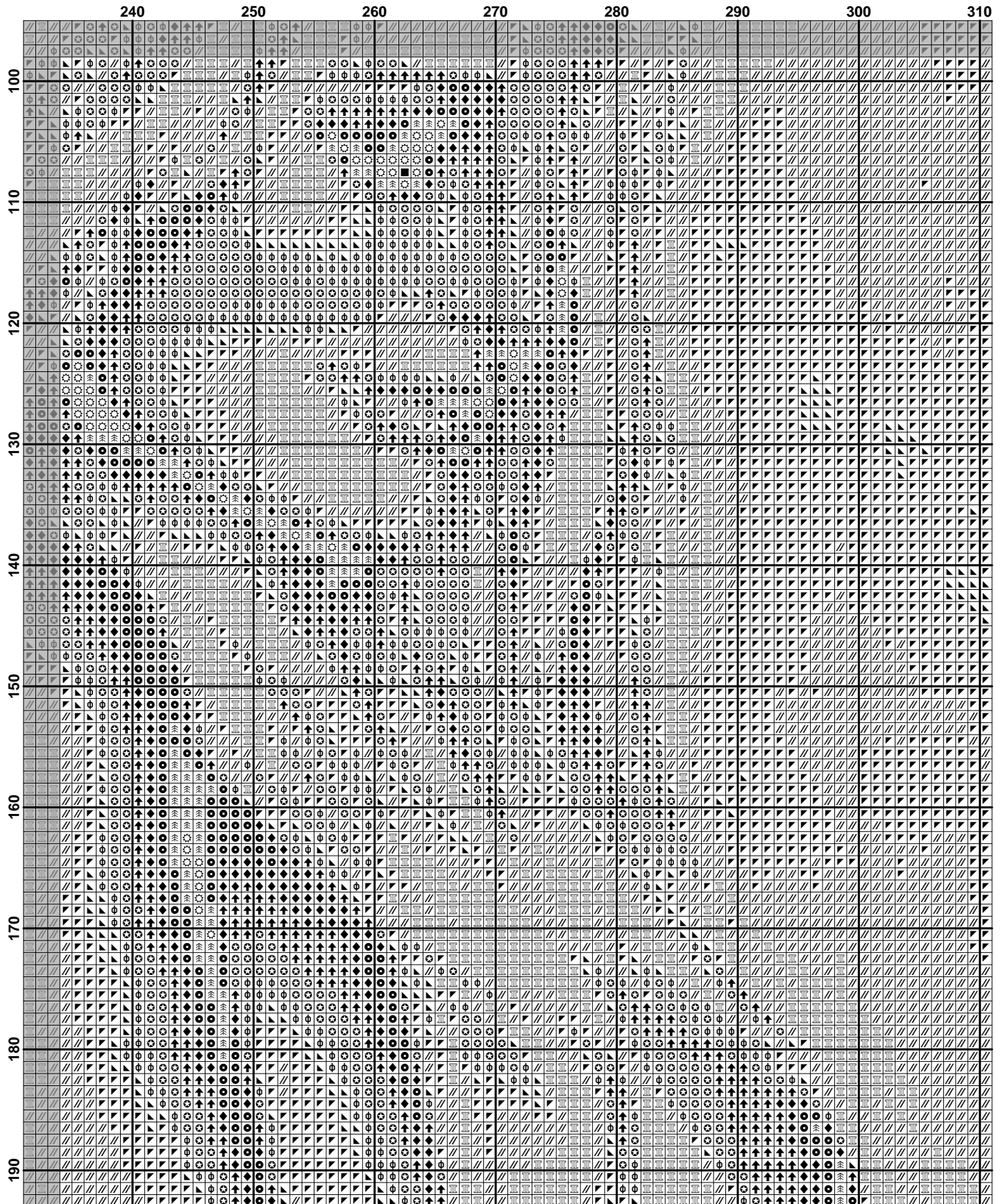
	310	320	330	340	350	360	370	380
10								
20								
30								
40								
50								
60								
70								
80								
90								

	390	400
10		
20		
30		
40		
50		
60		
70		
80		
90		

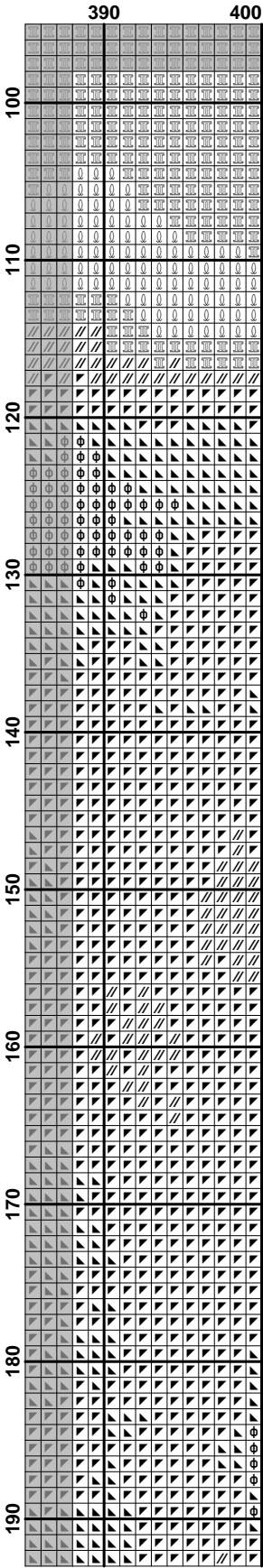
	10	20	30	40	50	60	70	80
100								
110								
120								
130								
140								
150								
160								
170								
180								
190								

	80	90	100	110	120	130	140	150
100								
110								
120								
130								
140								
150								
160								
170								
180								
190								



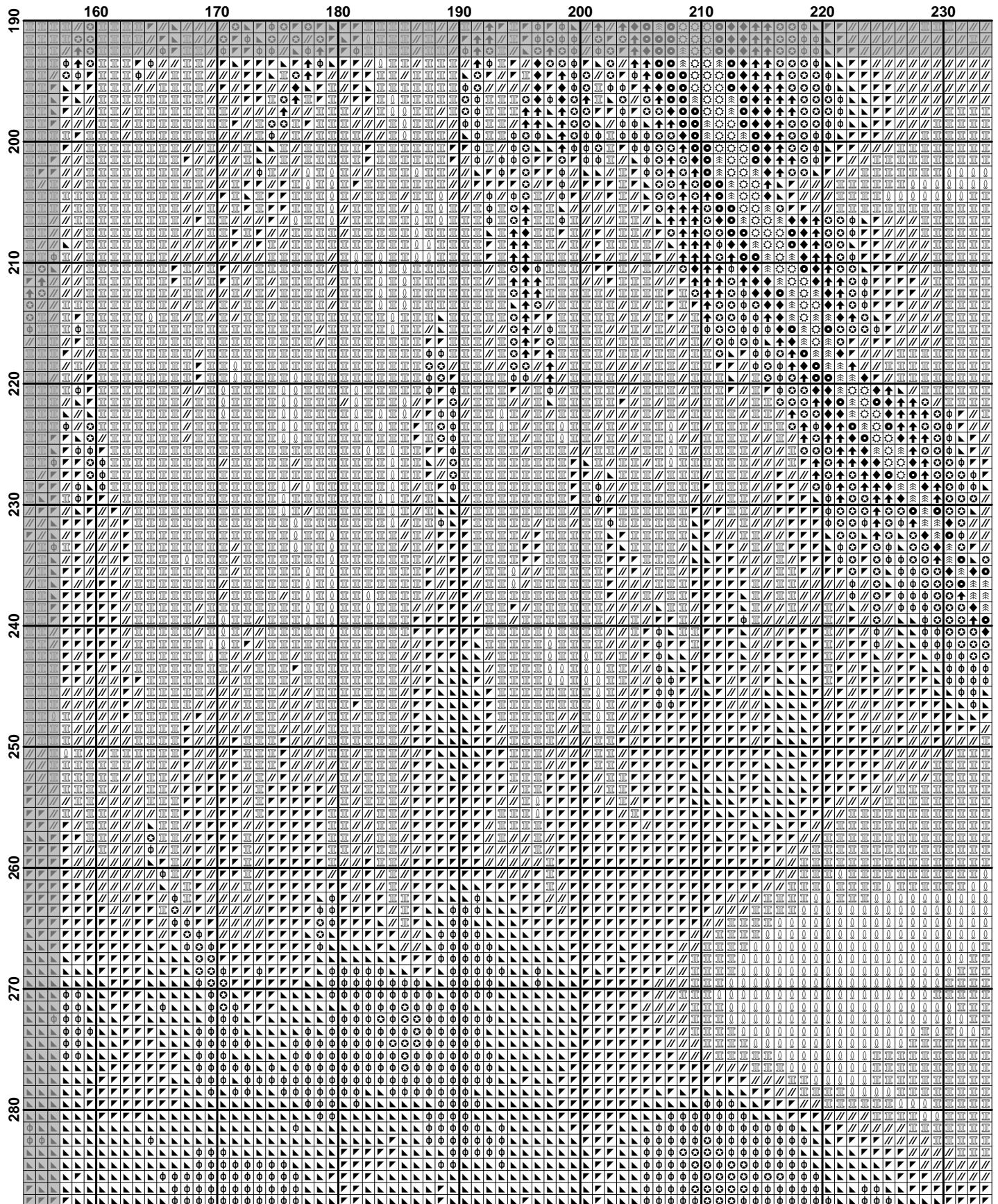


	310	320	330	340	350	360	370	380
100								
110								
120								
130								
140								
150								
160								
170								
180								
190								



	10	20	30	40	50	60	70	80
190								
191								
192								
193								
194								
195								
196								
197								
198								
199								
200								
201								
202								
203								
204								
205								
206								
207								
208								
209								
210								
211								
212								
213								
214								
215								
216								
217								
218								
219								
220								
221								
222								
223								
224								
225								
226								
227								
228								
229								
230								
231								
232								
233								
234								
235								
236								
237								
238								
239								
240								
241								
242								
243								
244								
245								
246								
247								
248								
249								
250								
251								
252								
253								
254								
255								
256								
257								
258								
259								
260								
261								
262								
263								
264								
265								
266								
267								
268								
269								
270								
271								
272								
273								
274								
275								
276								
277								
278								
279								
280								

	80	90	100	110	120	130	140	150
190								
200								
210								
220								
230								
240								
250								
260								
270								
280								



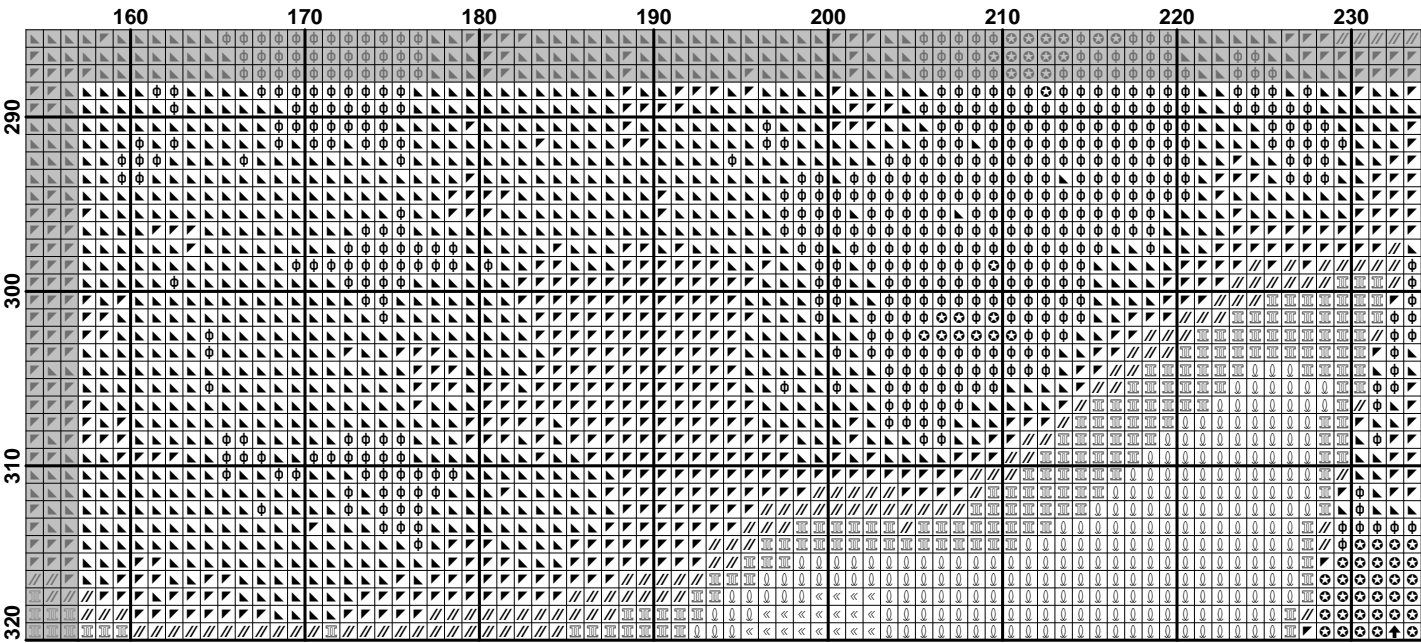
	240	250	260	270	280	290	300	310
190								
200								
210								
220								
230								
240								
250								
260								
270								
280								

	310	320	330	340	350	360	370	380
190								
200								
210								
220								
230								
240								
250								
260								
270								
280								

[illegible]

	10										20										30										40										50										60										70										80									
320																																																																																
310																																																																																
300																																																																																
290																																																																																

Figure 1 displays a 4x16 grid of small plots showing the evolution of the probability distribution $P(x)$ for different values of x (80 to 155) and time steps t (290 to 320). The plots are arranged in a grid where the columns represent x and the rows represent t . The plots show a transition from a single peak to a multi-peaked distribution as t increases.



[illegible]

